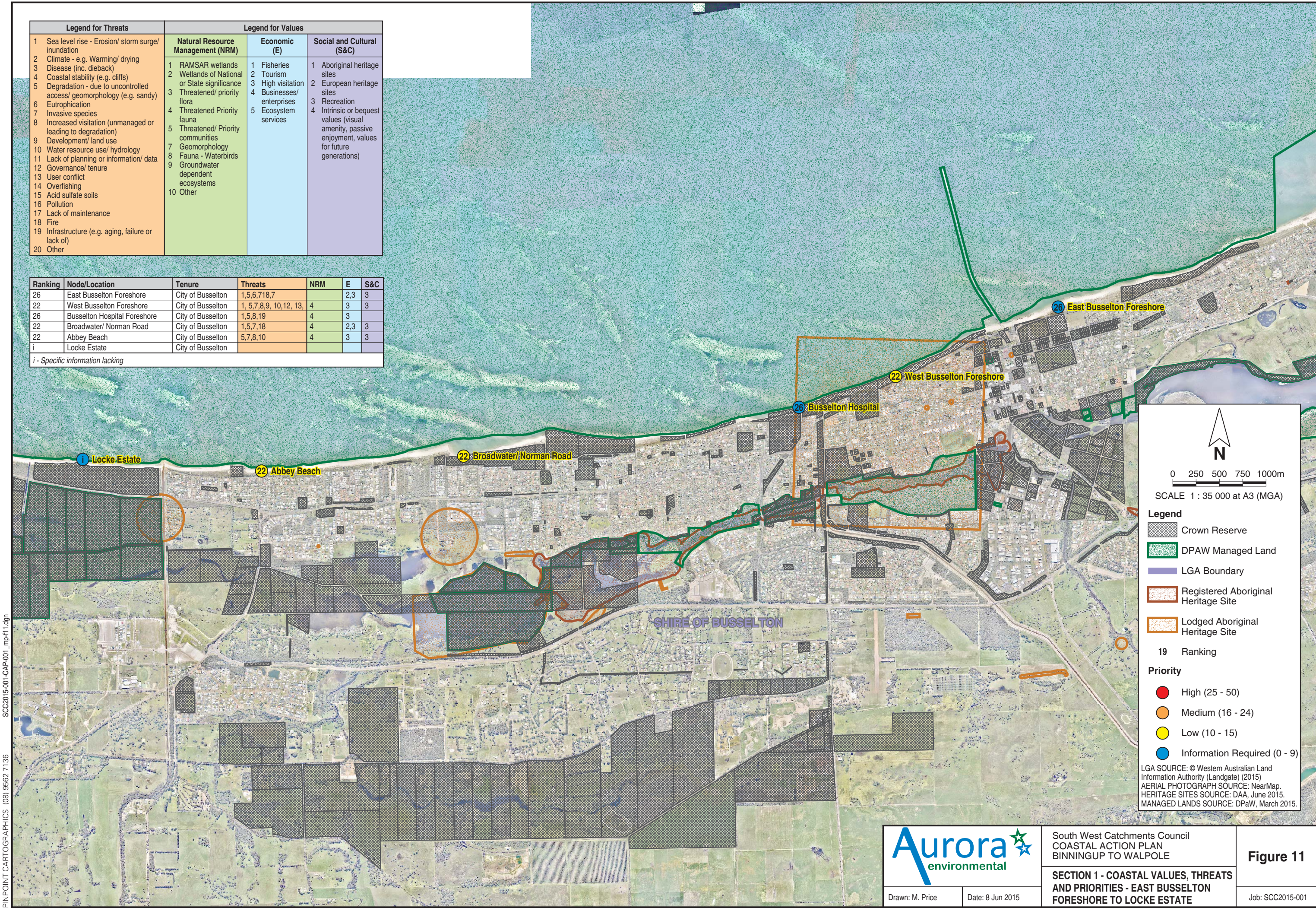


SOC2015-001-CAP-001\_mpf11.dgn  
PINPOINT CARTOGRAPHICS (08) 9562 7136



Legend for Threats		Legend for Values				
1	Sea level rise - Erosion/ storm surge/ inundation	Natural Resource Management (NRM)		Social and Cultural (S&C)		
2	Climate - e.g. Warming/ drying					
3	Disease (inc. dieback)					
4	Coastal stability (e.g. cliffs)					
5	Degradation - due to uncontrolled access/ geomorphology (e.g. sandy)					
6	Eutrophication					
7	Invasive species					
8	Increased visitation (unmanaged or leading to degradation)					
9	Development/ land use					
10	Water resource use/ hydrology					
11	Lack of planning or information/ data	1	Fisheries		1	Aboriginal heritage sites
12	Governance/ tenure	2	Tourism		2	European heritage sites
13	User conflict	3	High visitation		3	Recreation
14	Overfishing	4	Businesses/ enterprises		4	Intrinsic or bequest values (visual amenity, passive enjoyment, values for future generations)
15	Acid sulfate soils	5	Ecosystem services			
16	Pollution					
17	Lack of maintenance					
18	Fire					
19	Infrastructure (e.g. aging, failure or lack of)					
20	Other					

Ranking	Node/Location	Tenure	Threats	NRM	E	S&C
26	East Busselton Foreshore	City of Busselton	1,5,6,7,18,7	4	2,3	3
22	West Busselton Foreshore	City of Busselton	1, 5,7,8,9, 10,12, 13,	4	3	3
26	Busselton Hospital Foreshore	City of Busselton	1,5,8,19	4	3	3
22	Broadwater/ Norman Road	City of Busselton	1,5,7,18	4	2,3	3
22	Abbey Beach	City of Busselton	5,7,8,10	4	3	3
i	Locke Estate	City of Busselton				

i - Specific information lacking

N

0 250 500 750 1000m

SCALE 1 : 35 000 at A3 (MGA)

**Legend**

- Crown Reserve
- DPAW Managed Land
- LGA Boundary
- Registered Aboriginal Heritage Site
- Lodged Aboriginal Heritage Site

**19 Ranking**

**Priority**

- High (25 - 50)
- Medium (16 - 24)
- Low (10 - 15)
- Information Required (0 - 9)

LGA SOURCE: © Western Australian Land Information Authority (Landgate) (2015)  
AERIAL PHOTOGRAPH SOURCE: NearMap.  
HERITAGE SITES SOURCE: DAA, June 2015.  
MANAGED LANDS SOURCE: DPaW, March 2015.